

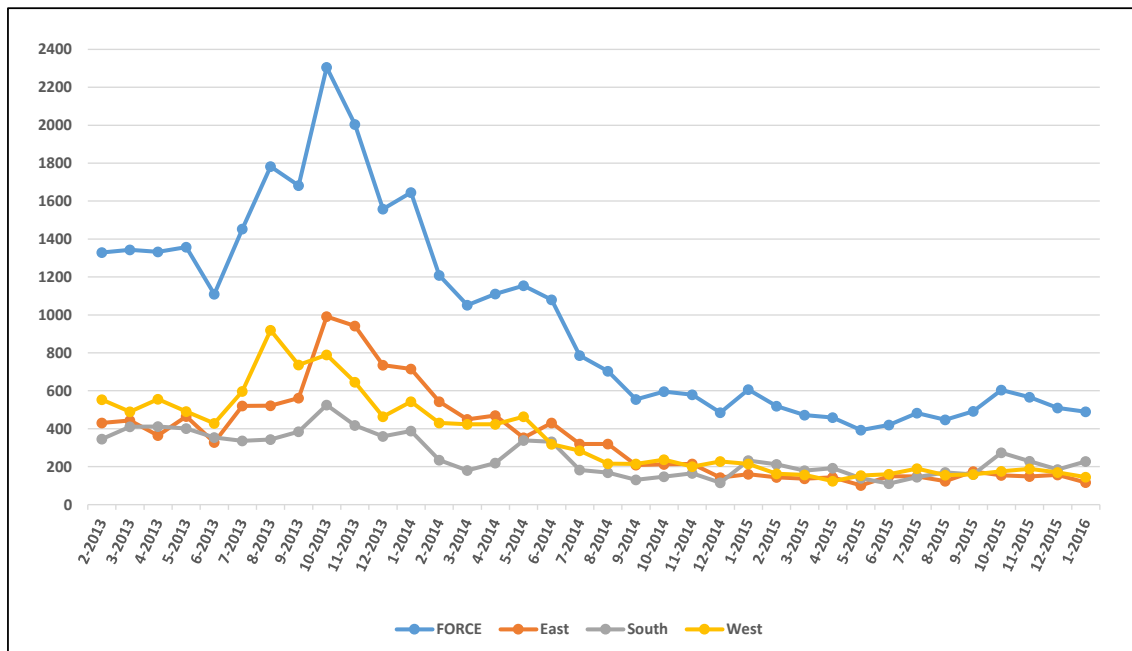
## Stop and Search Report

There have been a total of **34,674** Stop and Searches recorded for the Constabulary for the period 01/02/13-31/01/16 as at 03/02/16.

The table below shows the total Stop and Searches for The Constabulary for the period above broken down into 12 months periods and by BCU.

	<b>TOTAL</b>	<b>Feb 13 – Jan 14</b>	<b>Feb 14– Jan 15</b>	<b>Feb 15 – Jan 16</b>
<b>FORCE</b>	<b>34,674</b>	<b>18,903</b>	<b>9,916</b>	<b>5,855</b>
<b>East BCU</b>	12,532	7,016	3,821	1,695
<b>South BCU</b>	9,342	4,677	2,444	2,221
<b>West BCU</b>	12,800	7,210	3,651	1,939

The chart below shows the total Stop and Searches for The Constabulary for the period 01/02/13-31/01/16 broken down by month and BCU.



As can be seen from the chart above, the average number of Stop and Searches for the Force for the early months of 2013 was about 1,300. This was followed by a drop to 1,110 in June 2013, but then a steady increase each month in the preceding months with the highest number being recorded in October 2013 (2,306 for the Force). This was then followed by a sharp, then steady decline in the numbers of Stop and Searches recorded with two clear step changes. From June 2015 to October 2015 we have shown a month on month increase (with the exception of slight drop in August) with October equalling January's 2015 result (605). Since October we have started to reduce again with only 490 Stop searches recorded for the Force in January 2016. The average for the past twelve months is 487 per month.

## Legislation

The table below shows the total Stop and Searches for The Constabulary for the period 01/02/13-31/01/16 broken down by BCU area and Power of Search:

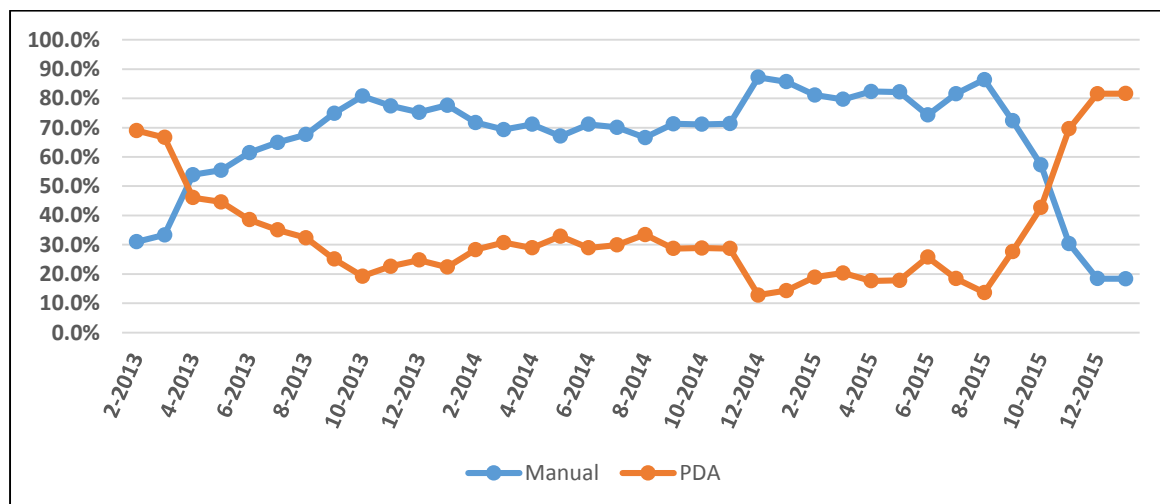
	FORCE	East BCU	South BCU	West BCU
<b>Total</b>	<b>34,674</b>	<b>12,532</b>	<b>9,342</b>	<b>12,800</b>
<b>S1 PACE</b>	<b>20,189</b>	8,238	4,841	7,110
<b>S23 Drugs</b>	<b>13,727</b>	4,156	4,073	5,498
<b>S43/44 Terrorism</b>	<b>8</b>	1	4	3
<b>S47 Firearms</b>	<b>155</b>	52	63	40
<b>S60 CJ &amp; PO</b>	<b>381</b>	31	338	12
<b>Other</b>	<b>214</b>	54	23	137

## Input Method

The table below shows the total Stop and Searches for The Constabulary for the period 01/02/13-31/01/16 broken down by area and Input Method:

Numbers	FORCE	East BCU	South BCU	West BCU
<b>Total</b>	<b>34,674</b>	<b>12,532</b>	<b>9,342</b>	<b>12,800</b>
<b>Manual</b>	<b>23,055 (66.5%)</b>	8,665 (69.1%)	4,798 (51.4%)	9,592 (74.9%)
<b>PDA</b>	<b>11,619 (33.5%)</b>	3,867 (30.9%)	4,544 (48.6%)	3,208 (25.1%)

The chart below shows the total Stop and Searches for The Constabulary for the period 01/02/13-31/01/16 broken down by month and Input Method.



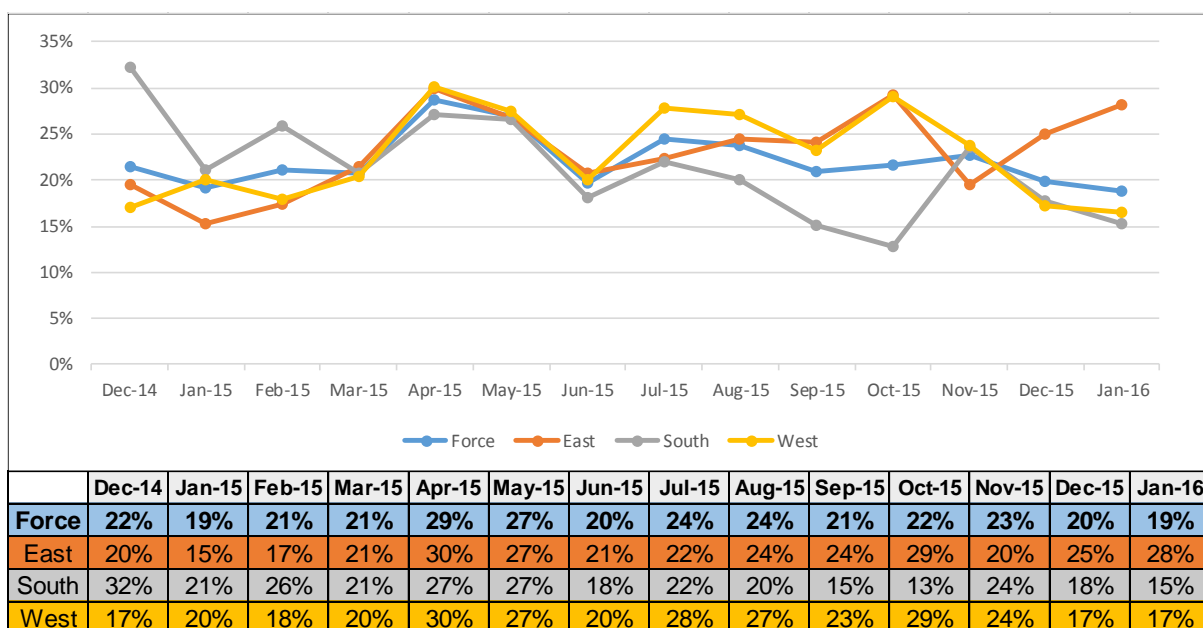
As can be seen above, the highest proportion of Stop and Searches were input on PDA's until the downward trend that resulted in April 2013 showing the highest proportion being Manually Input (55.4%). The highest proportion then continued to be Manually Input until August 2015, then PDA input started showing an upward trend of increasing proportions. This resulted in October 2015 showing PDA Input as the biggest proportion (57.3%) and continuing in the subsequent months.

## Outcomes

From mid-December 2014 onwards we changed from recording Arrest or NFA as the only options, to recording the following outcomes:

- Arrest;
- Summons/ charged by post;
- Caution (simple or conditional);
- Khat or Cannabis Warning; Penalty Notice for Disorder;
- Community Resolution and
- A No Further Action Disposal.

The graph below shows Positive Outcome Rates (excluding No Further Action Disposals) for The Constabulary and each area for the period 01/12/14-31/01/16 broken down by month:



\*Please Note: Due to the system changes only coming in mid-December there were 118 records with a NULL value so are not included in the above chart

As can be seen from the above graph, positive outcomes were on a sharp upward trend for The Force, with April 2015 showing the highest result of 29%. However, June 2015 saw a sharp decrease with subsequent months reverting back to around the average. As can be seen in the chart and tables, South started with the highest individual outcome ratio of 32% in December and also for the subsequent three months (21%, 26%, 21% respectively). From then, each BCU has in turn shown the highest individual ratio for different months. However South has shown the highest individual outcome ratio overall (32% in December 14) but also the lowest (13% in October 15). East is currently showing the highest outcome ratio (28%) and is the only BCU showing a recent upward trend. South and West are currently showing outcome ratios of 15% and 17% respectively and showing a downward trend. East and West's outcome ratio has contributed to bringing the Force's ratio down to 19%.

The table below shows the total Stop and Searches for The Constabulary for the period 01/12/14-31/01/16 broken down by area and outcome.

	<b>FORCE</b>	<b>East</b>	<b>South</b>	<b>West</b>
<b>Total</b>	<b>6,829</b>	<b>1,934</b>	<b>2,549</b>	<b>2,346</b>
<b>Arrest</b>	<b>880 (13%)</b>	256 (13%)	304 (12%)	320 (14%)
<b>Summons/charged by post</b>	<b>111 (2%)</b>	35 (2%)	47 (2%)	29 (1%)
<b>Caution (simple or conditional)</b>	<b>36 (1%)</b>	15 (1%)	13 (1%)	8 (0%)
<b>Khat or Cannabis Warning</b>	<b>276 (4%)</b>	78 (4%)	90 (4%)	108 (5%)
<b>Penalty Notice for Disorder</b>	<b>62 (1%)</b>	18 (1%)	28 (1%)	16 (1%)
<b>Community Resolution</b>	<b>138 (2%)</b>	44 (2%)	46 (2%)	48 (2%)
<b>No Further Action Disposal</b>	<b>5,326 (78%)</b>	1,488 (77%)	2,021 (79%)	1,817 (77%)

\*Please Note: Due to the system changes only coming in mid-December there were 118 records with a NULL value so are not included in the above table.

The table below shows the total Stop and Searches for the period 01/12/14-31/01/16 broken down by Power of Search and Outcome.

	<b>Total</b>	<b>S1 PACE</b>	<b>S23 Drugs</b>	<b>S43/44 Terror</b>	<b>S47 F/arms</b>	<b>S60 CJ &amp; PO</b>	<b>Other</b>
<b>Total</b>	<b>6,829</b>	<b>3,315</b>	<b>3,440</b>	<b>5</b>	<b>31</b>	<b>7</b>	<b>31</b>
<b>Arrest</b>	<b>880</b>	490	381	0	5	1	3
<b>Summons/charged by post</b>	<b>111</b>	52	52	0	0	1	6
<b>Caution (simple or conditional)</b>	<b>36</b>	5	30	0	1	0	0
<b>Khat or Cannabis Warning</b>	<b>276</b>	38	238	0	0	0	0
<b>Penalty Notice for Disorder</b>	<b>62</b>	15	47	0	0	0	0
<b>Community Resolution</b>	<b>138</b>	61	77	0	0	0	0
<b>No Further Action Disposal</b>	<b>5,326</b>	2,654	2,615	5	25	5	22

\*Please Note: Due to the system changes only coming in mid-December there were 118 records with a NULL value so are not included in the above table.

## Outcome Linked to Object of Search

The new data tells us how many of the positive outcomes were directly linked to the object of the search. For the period 01/12/14-31/01/16 this stands at 1,232 out of 1,503 positive outcomes (82%) for The Constabulary. Please find the BCU breakdown below.

- East: 363 out of 446 (81%)
- South: 441 out of 528 (84%)
- West: 428 out of 529 (82%)

The table below shows the total Stop and Searches for The Constabulary for period 01/12/14-31/01/16 broken down by Power of Search and Outcome where the Outcome IS linked to the object of search.

	Total	S1 PACE	S23 Drugs	S43/44 Terrorism	S47 Firearms	S60 CJ & PO	Other
<b>Total</b>	<b>1,232</b>	<b>482</b>	<b>740</b>	<b>0</b>	<b>4</b>	<b>2</b>	<b>4</b>
<b>Arrest</b>	<b>682</b>	359	319	0	3	1	0
<b>Summons/charged by post</b>	<b>82</b>	37	40	0	0	1	4
<b>Caution (simple or conditional)</b>	<b>36</b>	5	30	0	1	0	0
<b>Khat or Cannabis Warning</b>	<b>254</b>	19	235	0	0	0	0
<b>Penalty Notice for Disorder</b>	<b>52</b>	10	42	0	0	0	0
<b>Community Resolution</b>	<b>126</b>	52	74	0	0	0	0

## Diversity

A key part of the Best Use of Stop and Search Scheme is to ensure that the powers are used fairly and without discrimination.

The tables below show displays from the Diversity and Equality File available under the Monthly Products Section of Performance Pages on Sherlock.

The tables below shows the total recorded Stop and Searches for the period 01/02/15-31/01/16 and 01/02/14-31/01/15 broken down by BCU and All Self Defined Ethnicities:

Stop Searches By Ethnicity (Later Period)					Stop Searches By Ethnicity (Earlier Period)					FORCE	
	EAST Division	SOUTH Division	WEST Division	ALL		EAST Division	SOUTH Division	WEST Division	ALL	Number Change	% Change
White	1,214	1,983	1,790	4,987	White	3,046	2,054	3,530	8,630	- 3,643	- 103.2%
All VME	424	168	71	663	All VME	696	221	54	971	- 308	- 31.7%
Asian	390	98	35	523	Asian	649	140	28	817	- 294	- 36.0%
Black	8	29	19	56	Black	15	41	11	67	- 11	- 16.4%
Mixed	23	35	15	73	Mixed	21	37	12	70	+ 3	+ 4.3%
Other	3	6	2	11	Other	11	3	3	17	- 6	- 35.3%
Not Stated	52	61	38	151	Not Stated	79	169	67	315	- 164	- 52.1%
ALL	1,690	2,212	1,899	5,801	ALL	3,821	2,444	3,651	9,916	- 4,115	- 41.5%

The tables below shows the total recorded Stop and Searches per 1,000 population for the period 01/12/14-31/12/15 broken down by Division and split into Self Defined Ethnicity recorded as White (W1, W2, W9) and Self Defined Ethnicity recorded as All VME (A1, A2, A3, A9, B1, B2, B9, M1, M2, M3, M9, O1, O9):

For the period 01/02/14-31/01/15

Stop Searches Per 1,000 Pop (White)				Stop Searches Per 1,000 Pop (All VME)				Index and Proportion Test	
	Stop Searches	Population (K)	Searches per K Pop		Stop Searches	Population (K)	Searches per K Pop	Index	Test
EAST Division	3,046	439.96	6.92	EAST Division	696	89.89	7.74	1.12	Higher
SOUTH Division	2,054	430.70	4.77	SOUTH Division	221	36.40	6.07	1.27	Higher
WEST Division	3,530	449.38	7.86	WEST Division	54	14.57	3.71	0.47	Lower
<b>The Constabulary</b>	<b>8,630</b>	<b>1320.04</b>	<b>6.54</b>	<b>The Constabulary</b>	<b>971</b>	<b>140.86</b>	<b>6.89</b>	1.05	Not Diff

For the period 01/02/15-31/01/16

Stop Searches Per 1,000 Pop (White)				Stop Searches Per 1,000 Pop (All VME)				Index and Proportion Test	
	Stop Searches	Population (K)	Searches per K Pop		Stop Searches	Population (K)	Searches per K Pop	Index	Test
EAST Division	1,214	439.96	2.76	EAST Division	424	89.89	4.72	1.71	Higher
SOUTH Division	1,983	430.70	4.60	SOUTH Division	168	36.40	4.62	1.00	Not Diff
WEST Division	1,790	449.38	3.98	WEST Division	71	14.57	4.87	1.22	Not Diff
<b>The Constabulary</b>	<b>4,987</b>	<b>1320.04</b>	<b>3.78</b>	<b>The Constabulary</b>	<b>663</b>	<b>140.86</b>	<b>4.71</b>	1.25	Higher

WHITE - All White

All VME - All Asian, Black, Mixed and Other

INDEX - Comparison Parameters Result (VME) divided by Primary Parameters Result (White)

PROPORTION TEST - Whether Comparison result (VME) is Higher Than, Lower Than or Not Different from Primary Result (White)