

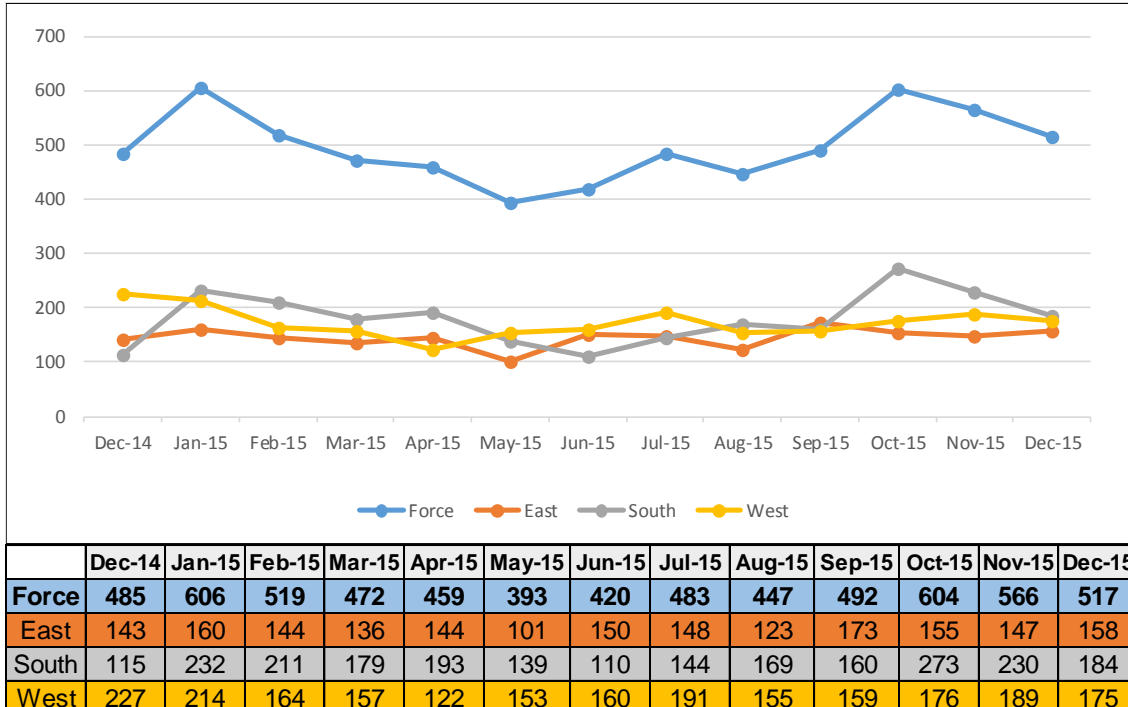
## Best Use of Stop and Search

There have been a total of **6,463** Stop and Searches recorded for the period 01/12/14-31/12/15 as at 16/01/16.

The table below shows the total Stop and Searches for The Constabulary for the period above broken down by BCU (basic command unit) and Power of Search:

	<b>FORCE</b>	<b>East</b>	<b>South</b>	<b>West</b>
<b>Total</b>	<b>6,463</b>	<b>1,882</b>	<b>2,339</b>	<b>2,242</b>
<b>S1 PACE</b>	<b>3,161</b>	939	1,168	1,054
<b>S23 Drugs</b>	<b>3,226</b>	914	1,140	1,172
<b>S43/44 Terrorism</b>	<b>5</b>	1	3	1
<b>S47 Firearms</b>	<b>32</b>	12	15	5
<b>S60 CJ &amp; PO</b>	<b>8</b>	0	5	3
<b>Other</b>	<b>31</b>	16	8	7

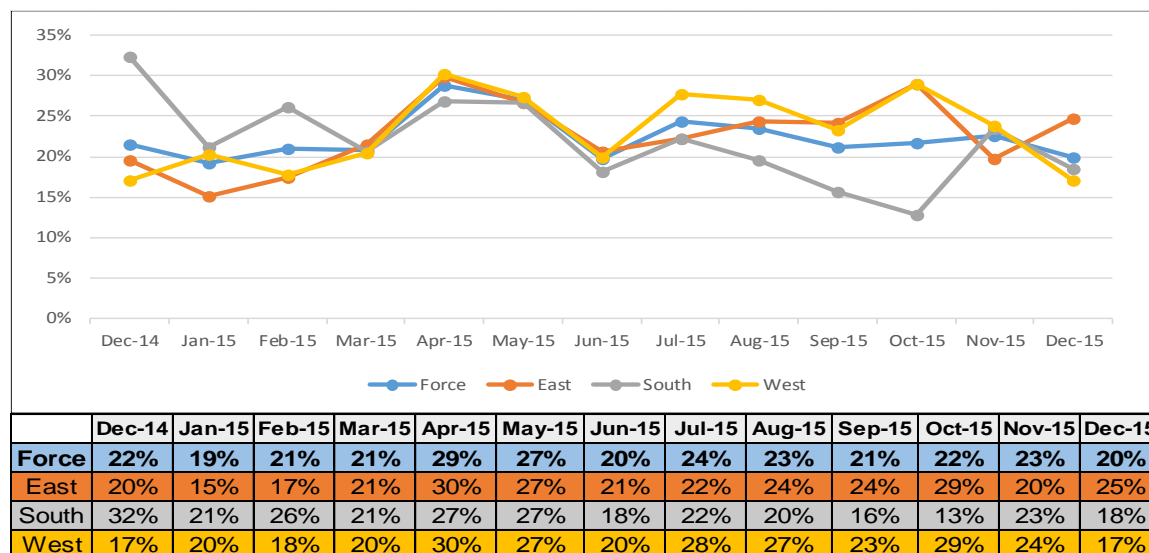
The chart below shows the total Stop and Searches for The Constabulary and BCU's for the period 01/12/14-31/12/15 broken down by month:



January showed the highest and first increase in recorded Stop and Searches since August 2014. From January there was then a decline in the numbers of Stop and Searches recorded. However, since June 2015 we have shown a month on month increase (with the exception of slight drop in August) with October nearly equalling January's highest result.

From mid-December onwards we changed from recording Arrest or NFA as the only options, to recording the following outcomes: Arrest; Summons/ charged by post; Caution (simple or conditional); Khat or Cannabis Warning; Penalty Notice for Disorder; Community Resolution and A No Further Action Disposal.

The graph below shows Positive Outcome Rates (excluding No Further Action Disposals) for The Constabulary and each Division broken down by month:



\*Please Note: Due to the system changes only coming in mid-December there were 118 records with a NULL value so are not included in the above chart or table.

As can be seen from the above graph, positive outcomes were on a sharp upward trend for the force, with April 2015 showing the highest result of 29%. However, June 2015 saw a sharp decrease with subsequent months reverting back to around the average.

The table below shows the total Stop and Searches for The Constabulary for the period 01/12/14-31/12/15 broken down by BCU and Outcome.

	FORCE	East	South	West
<b>Total</b>	<b>6,345</b>	<b>1,818</b>	<b>2,320</b>	<b>2,207</b>
<b>Arrest</b>	<b>827</b> <b>(13%)</b>	236 (13%)	287 (12%)	304 (14%)
<b>Summons/charged by post</b>	<b>104</b> <b>(2%)</b>	32 (2%)	44 (2%)	28 (1%)
<b>Caution (simple or conditional)</b>	<b>36</b> <b>(1%)</b>	15 (1%)	13 (1%)	8 (0%)
<b>Khat or Cannabis Warning</b>	<b>274</b> <b>(4%)</b>	78 (4%)	88 (4%)	108 (5%)
<b>Penalty Notice for Disorder</b>	<b>49</b> <b>(1%)</b>	15 (1%)	20 (1%)	14 (1%)
<b>Community Resolution</b>	<b>123</b> <b>(2%)</b>	37 (2%)	42 (2%)	44 (2%)
<b>No Further Action Disposal</b>	<b>4,932</b> <b>(78%)</b>	1,405 (77%)	1,826 (79%)	1,701 (77%)

\*Please Note: Due to the system changes only coming in mid-December there were 118 records with a NULL value so are not included in the above table.

The table below shows the total Stop and Searches for the period 01/12/14-30/11/15 broken down by Power of Search and Outcome.

	Total	S1 PACE	S23 Drugs	S43/44 Terrorism	S47 Firearms	S60 CJ & PO	Other
<b>Total</b>	<b>6,345</b>	<b>3,089</b>	<b>3,132</b>	<b>5</b>	<b>30</b>	<b>8</b>	<b>31</b>
<b>Arrest</b>	<b>827</b>	456	362	0	5	1	3
<b>Summons/charged by post</b>	<b>104</b>	48	49	0	0	1	6
<b>Caution (simple or conditional)</b>	<b>36</b>	5	30	0	1	0	0
<b>Khat or Cannabis Warning</b>	<b>274</b>	37	237	0	0	0	0
<b>Penalty Notice for Disorder</b>	<b>49</b>	12	37	0	0	0	0
<b>Community Resolution</b>	<b>123</b>	58	65	0	0	0	0
<b>No Further Action Disposal</b>	<b>4,932</b>	2,473	2,402	5	24	6	22

\*Please Note: Due to the system changes only coming in mid-December there were 118 records with a NULL value so are not included in the above table.

The new data tells us how many of the positive outcomes were directly linked to the object of the search. For the period 01/12/14-31/12/15 this stands at 1,165 out of 1,413 positive outcomes (82%) for The Constabulary. Please find the BCU breakdown below.

- East: 339 out of 413 (82%)
- South: 413 out of 494 (84%)
- West: 413 out of 506 (82%)

The table below shows the total Stop and Searches for The Constabulary for period 01/12/14-31/12/15 broken down by Power of Search and Outcome where the Outcome **IS** linked to the object of search.

	Total	S1 PACE	S23 Drugs	S43/44 Terrorism	S47 Firearms	S60 CJ & PO	Other
<b>Total</b>	<b>1,165</b>	<b>454</b>	<b>701</b>	<b>0</b>	<b>4</b>	<b>2</b>	<b>4</b>
<b>Arrest</b>	<b>643</b>	337	302	0	3	1	0
<b>Summons/charged by post</b>	<b>78</b>	35	38	0	0	1	4
<b>Caution (simple or conditional)</b>	<b>36</b>	5	30	0	1	0	0
<b>Khat or Cannabis Warning</b>	<b>253</b>	19	234	0	0	0	0
<b>Penalty Notice for Disorder</b>	<b>42</b>	9	33	0	0	0	0
<b>Community Resolution</b>	<b>113</b>	49	64	0	0	0	0

## Diversity

A key part of the Best Use of Stop and Search Scheme is to ensure that the powers are used fairly and without discrimination.

The table below shows the total recorded Stop and Searches for the period 01/12/14-30/12/15 (as at 07/01/16) broken down by Division and All Self Defined Ethnicities:

	<b>EAST Division</b>	<b>SOUTH Division</b>	<b>WEST Division</b>	<b>ALL</b>
<b>White</b>	<b>1,373</b>	<b>2,099</b>	<b>2,068</b>	<b>5,540</b>
<b>All VME</b>	<b>447</b>	<b>151</b>	<b>78</b>	<b>676</b>
Asian	414	89	41	<b>544</b>
Black	8	26	19	<b>53</b>
Mixed	22	31	17	<b>70</b>
Other	3	5	1	<b>9</b>
<b>Not Stated</b>	<b>59</b>	<b>73</b>	<b>84</b>	<b>216</b>
<b>ALL</b>	<b>1,879</b>	<b>2,323</b>	<b>2,230</b>	<b>6,432</b>

The tables below shows the total recorded Stop and Searches per 1,000 population for the period 01/12/14-31/12/15 broken down by Division and split into Self Defined Ethnicity recorded as White (W1, W2, W9) and Self Defined Ethnicity recorded as All VME (A1, A2, A3, A9, B1, B2, B9, M1, M2, M3, M9, O1, O9):

<b>Stop Searches Per 1,000 Pop (White)</b>				<b>Stop Searches Per 1,000 Pop (All VME)</b>			<b>Index and Proportion</b>		
	<b>Stop Searches</b>	<b>Population (K)</b>	<b>Searches per K Pop</b>		<b>Stop Searches</b>	<b>Population (K)</b>	<b>Searches per K Pop</b>	<b>Index</b>	<b>Test</b>
EAST Division	917	439.96	<b>2.08</b>	EAST Division	332	89.89	<b>3.69</b>	1.77	Higher
SOUTH Division	1,425	430.70	<b>3.31</b>	SOUTH Division	118	36.40	<b>3.24</b>	0.98	Not Diff
WEST Division	1,358	449.38	<b>3.02</b>	WEST Division	61	14.57	<b>4.19</b>	1.39	Higher
<b>The Constabulary</b>	<b>3,700</b>	<b>1320.04</b>	<b>2.80</b>	<b>The Constabulary</b>	<b>511</b>	<b>140.86</b>	<b>3.63</b>	1.29	Higher

WHITE - All White

**All VME** - All Asian, Black, Mixed and Other

INDEX - Comparison Parameters Result (VME) divided by Primary Parameters Result (White)

PROPORTION TEST - Whether Comparison result (VME) is Higher Than, Lower Than or Not Different from Primary Result (White)